

Roundabout Safety



ROUNABOUT SAFETY BENEFITS

- Fewer Crashes
- 90% Fewer Fatalities
- 75% Fewer Injuries
- 37% Reduction In All Crash Types
- 10% to 40% fewer Bicycle/Pedestrian Collisions
- Head on and high-speed right-angle collisions are virtually eliminated
- Forced slower speeds reduce severity of collisions
- Roundabouts are safer for beginner and elderly drivers



(Federal Highway Administration)

CROSSING DISTANCE AND REFUGE ISLANDS:

Pedestrians only need to cross one direction of traffic at a time as they traverse roundabouts, reducing the crossing distance to one lane width. This reduces crossing time and pedestrian exposure to vehicles, thus reducing chances of vehicle-pedestrian collisions.

APPROACHING VEHICLES:

Pedestrians only have to look for approaching vehicles in one direction at a time.

SINGLE DIRECTION OF TRAVEL:

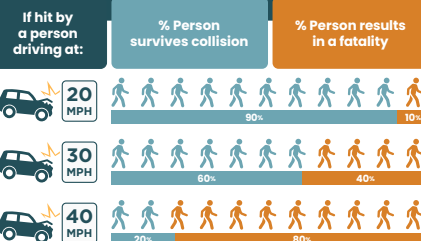
Because all vehicles travel in the same counter-clockwise direction, there are fewer opportunities for vehicle-to-vehicle contact. Approaching vehicles yield to circulating traffic and pedestrians which creates more predictable interactions.

CURB EXTENSIONS:

Curb extensions reduce the distance pedestrians must cross and improve visibility for both pedestrians and drivers. They also encourage pedestrians to cross at designated locations and provide more space for pedestrians to wait.

BIKE PATH:

Cyclists have the option to ride on the road or around the roundabout.



DEFLECTION:

Roundabouts feature channelized, curved approaches that reduce vehicle speeds. Slower speeds reduce the overall amount of collisions and reduce the severity of crashes that do occur.

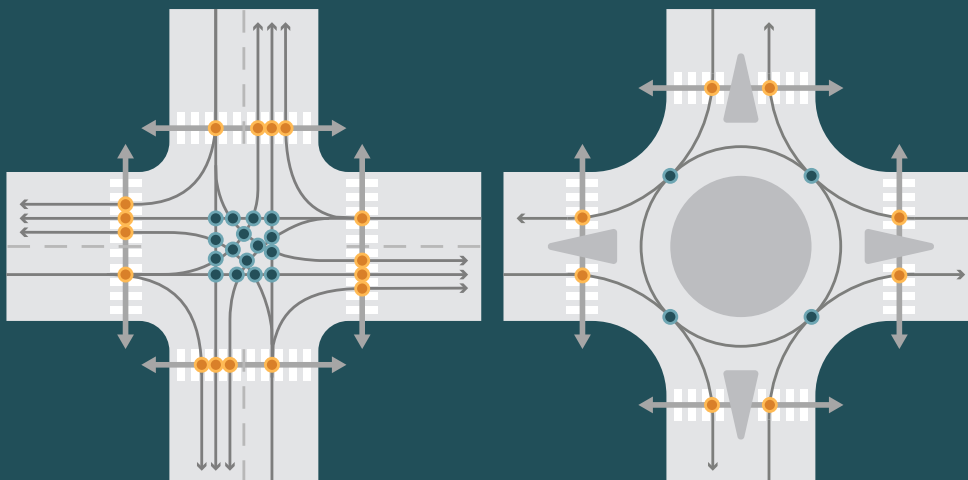
VEHICLE CONFLICT POINTS

● Vehicle/Pedestrian Conflict Points

Stop Control	18
Signal	18
Roundabout	8

○ Vehicle/Vehicle Conflict Points

Stop Control	24
Signal	24
Roundabout	8



What to do when an...
**EMERGENCY
VEHICLE**

APPROACHES A ROUNDABOUT



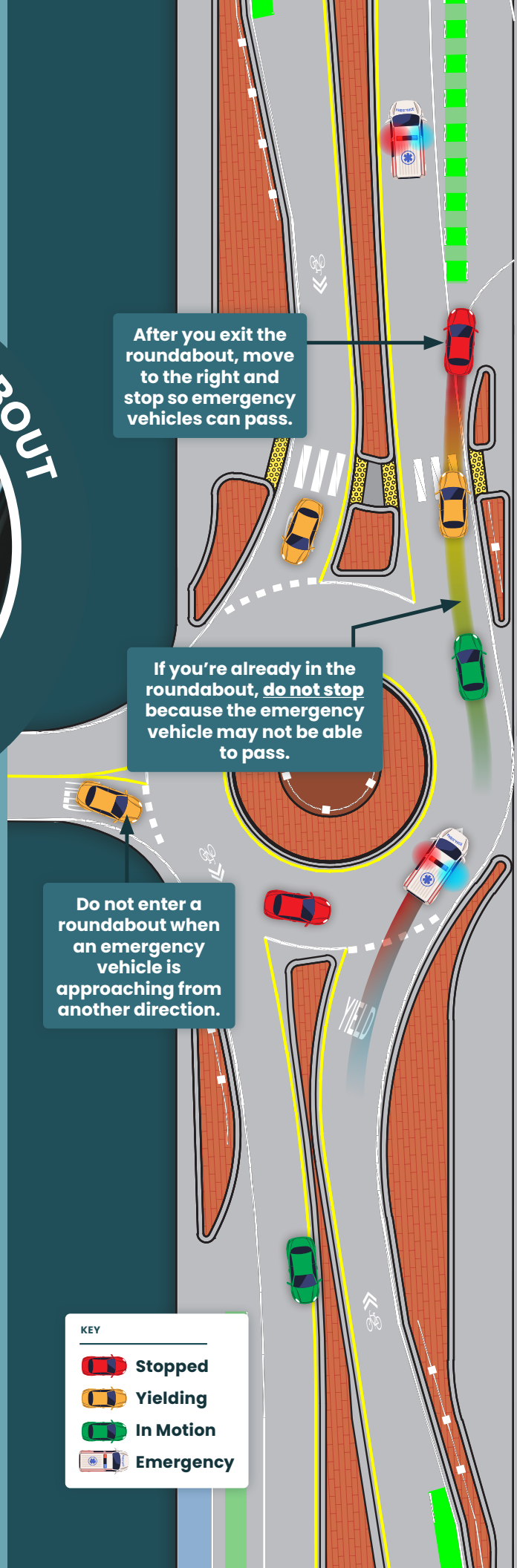
**EMERGENCY
VEHICLES**

By law, drivers must pull over for emergency vehicles.

In roundabouts, drivers must clear a roundabout if they hear (or see) an emergency vehicle coming.

Do not enter a roundabout if you notice an emergency vehicle approaching.

Drivers inside a roundabout should exit as soon as possible, then pull over.







After you exit the roundabout, move to the right and stop so emergency vehicles can pass.

If you're already in the roundabout, **do not stop** because the emergency vehicle may not be able to pass.

Do not enter a roundabout when an emergency vehicle is approaching from another direction.

KEY

-  **Stopped**
-  **Yielding**
-  **In Motion**
-  **Emergency**