

SEASIDE APARTMENTS

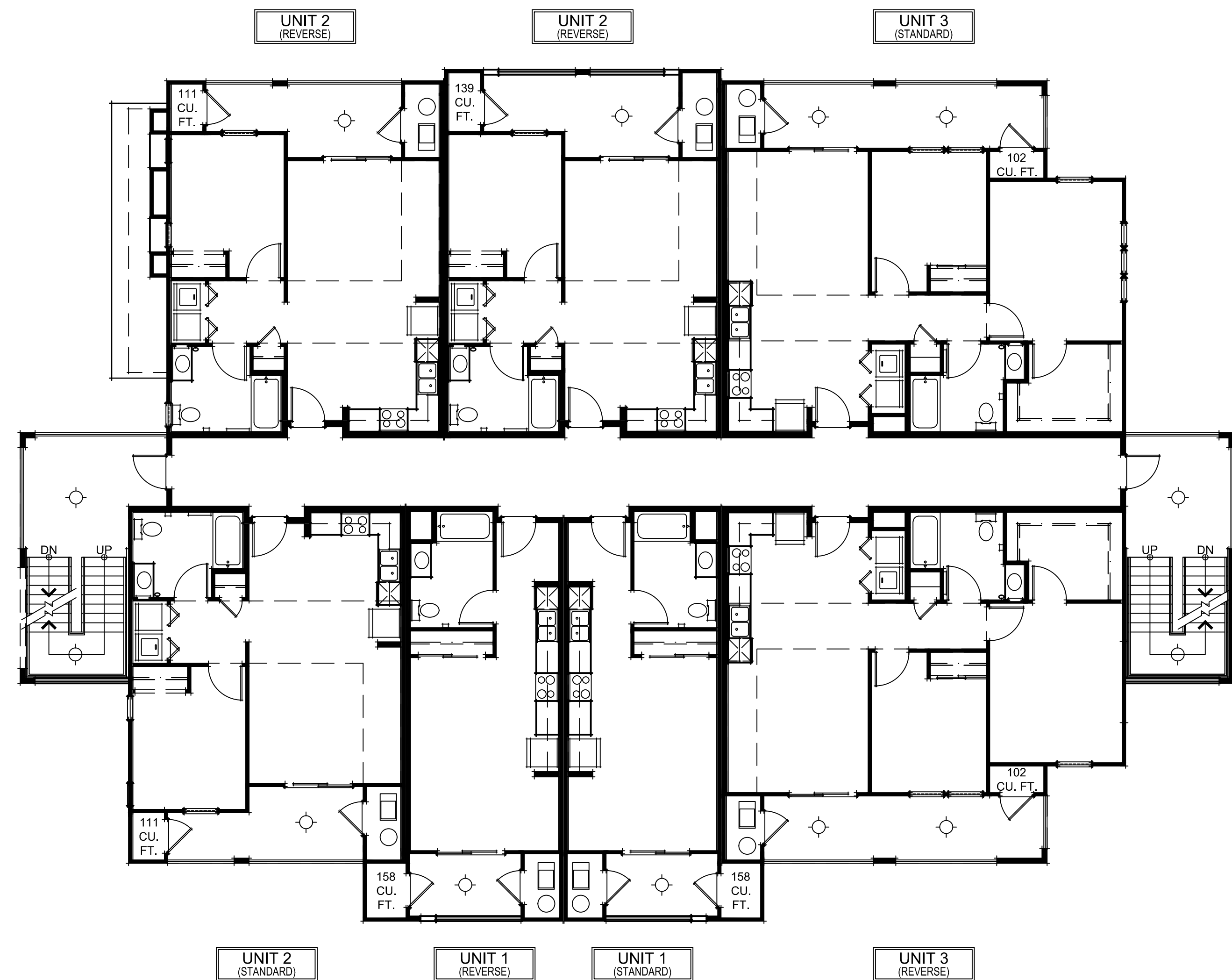
SEASIDE, CA | SEPTEMBER 19, 2023



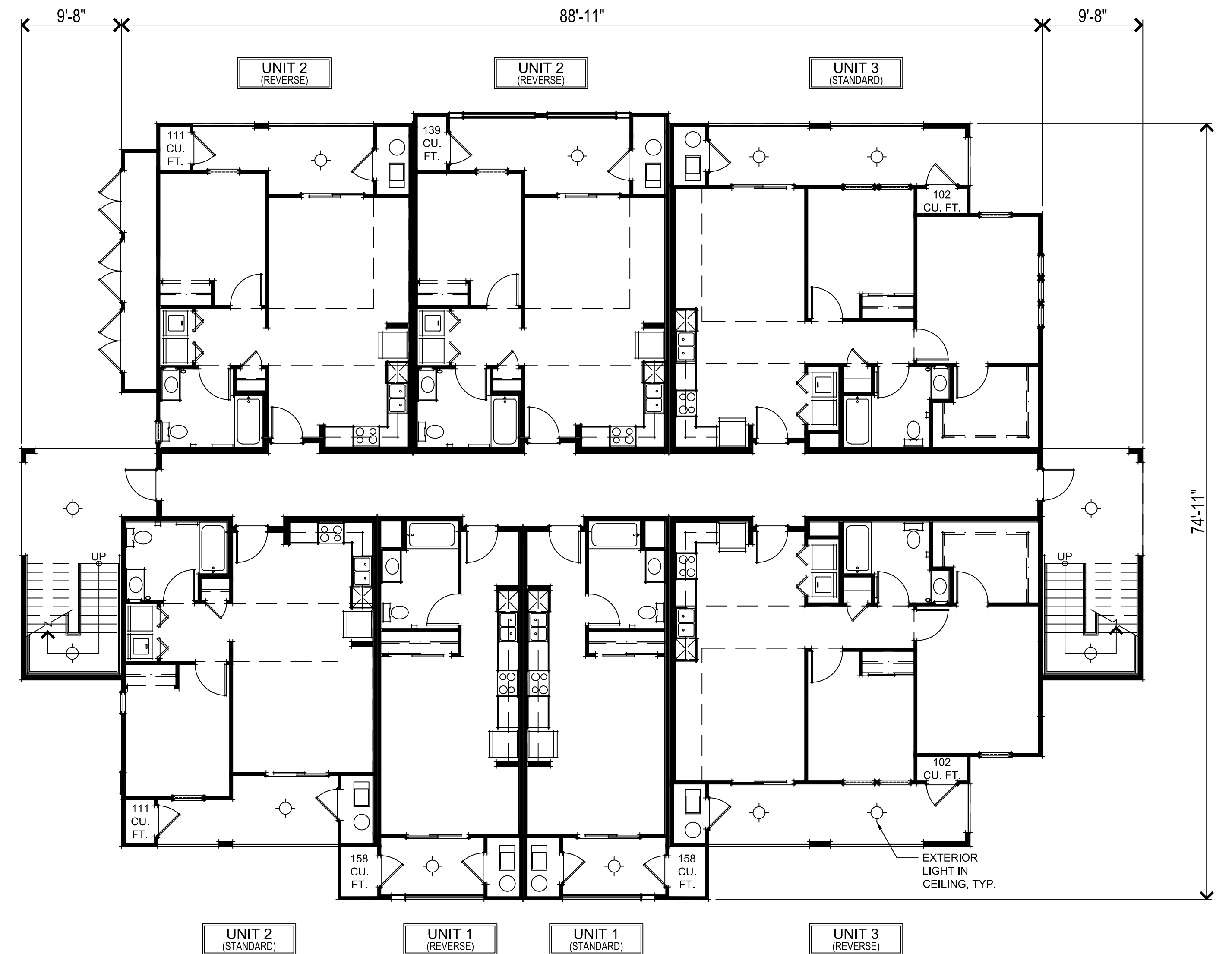
KB - BAKEWELL SEASIDE VENTURES, LLC.

SDG Architects, Inc.
3361 Walnut Blvd. Suite 120
Brentwood, CA 94513
925.634.7000 | sdgarchitectsinc.com





SECOND FLOOR PLAN & EXTERIOR LIGHTING PLAN



FIRST FLOOR PLAN & EXTERIOR LIGHTING PLAN

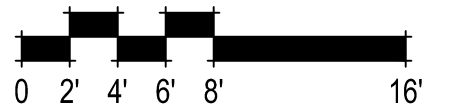


EXTERIOR DOWNLIGHT, CEILING MOUNTED LIGHT



BUILDING SQUARE FOOTAGES	
FIRST FLOOR	5193 SQ. FT.
SECOND FLOOR	5120 SQ. FT.
THIRD FLOOR	5120 SQ. FT.
TOTAL LIVING	15433 SQ. FT.

UNIT 1 SQUARE FOOTAGES		UNIT 2 SQUARE FOOTAGES		UNIT 3 SQUARE FOOTAGES	
LIVING	428 SQ. FT.	LIVING	637 SQ. FT.	LIVING	893 SQ. FT.
DECK	60 SQ. FT.	DECK @ SOUTH ELEV.	102 SQ. FT.	DECK	152 SQ. FT.
		DECK @ NORTH ELEV.	120 SQ. FT.		



310.507 Seaside Apartments
Seaside, CA
September 19, 2023

FLOOR PLANS & EXTERIOR LIGHTING PLANS

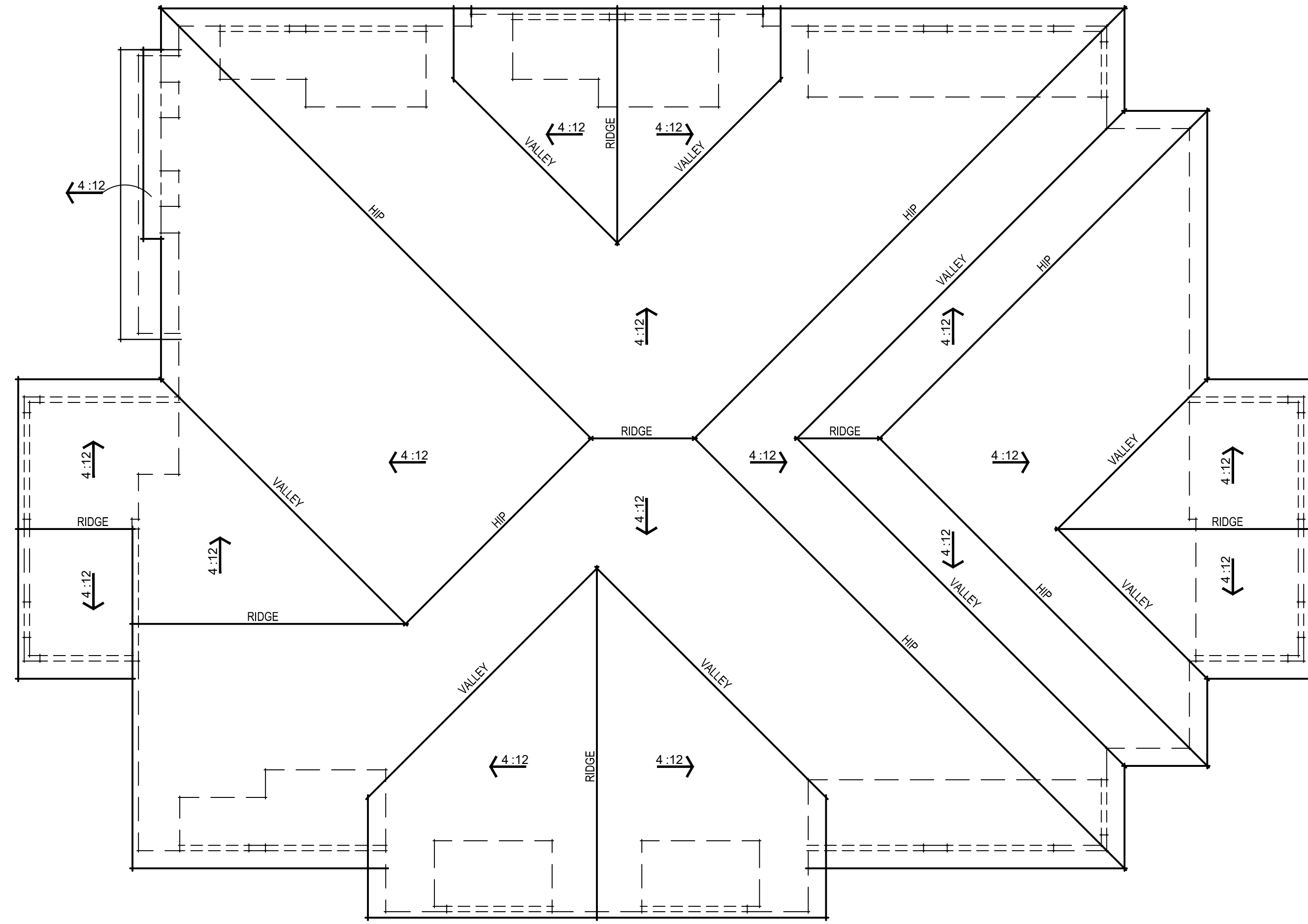
A01



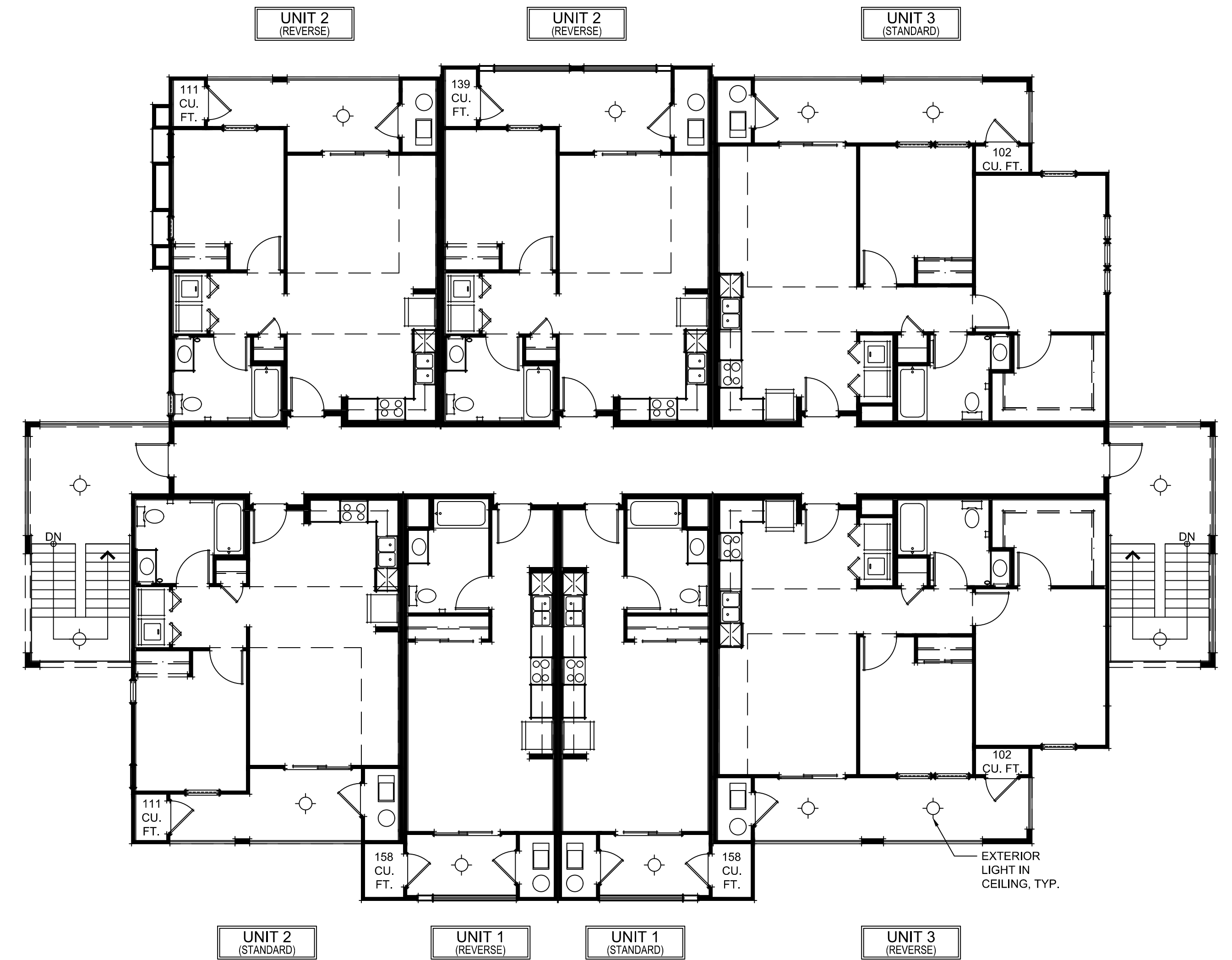
KB - BAKWELL SEASIDE VENTURES, LLC.

SDG Architects, Inc.
3361 Walnut Blvd, Suite 120
Brentwood, CA 94513
925.634.7000 | sdgarchitectsinc.com





ROOF PLAN



THIRD FLOOR PLAN & EXTERIOR LIGHTING PLAN



ROOFING
WESTLAKE
VILLA 900 SALERNO CLAY

STUCCO
SW 6119
ANTIQUÉ WHITE

TRIM / FASCIA
SW 7514
FOOTHILLS

ENTRY DOOR
SW 7740
MESSENGER BAG

RAILING
SW 7020
BLACK FOX



SOUTH ELEVATION



EAST ELEVATION



NORTH ELEVATION



WEST ELEVATION

EXTERIOR MATERIALS

1. S-TILE ROOF
2. STUCCO WALL FINISH
3. STUCCO *or* 2x FOAM TRIM
4. ARCHED STUCCO SOFFIT
5. METAL RAILING



310.507 Seaside Apartments
Seaside, CA
September 19, 2023



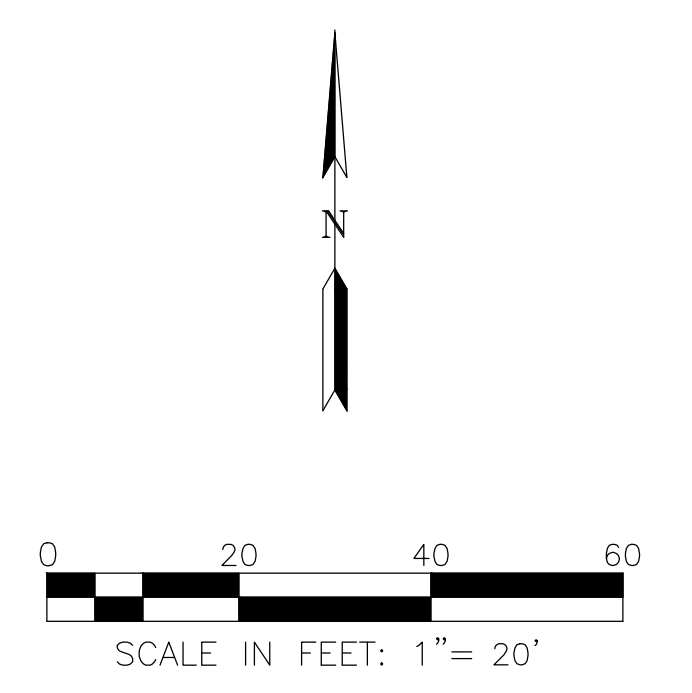
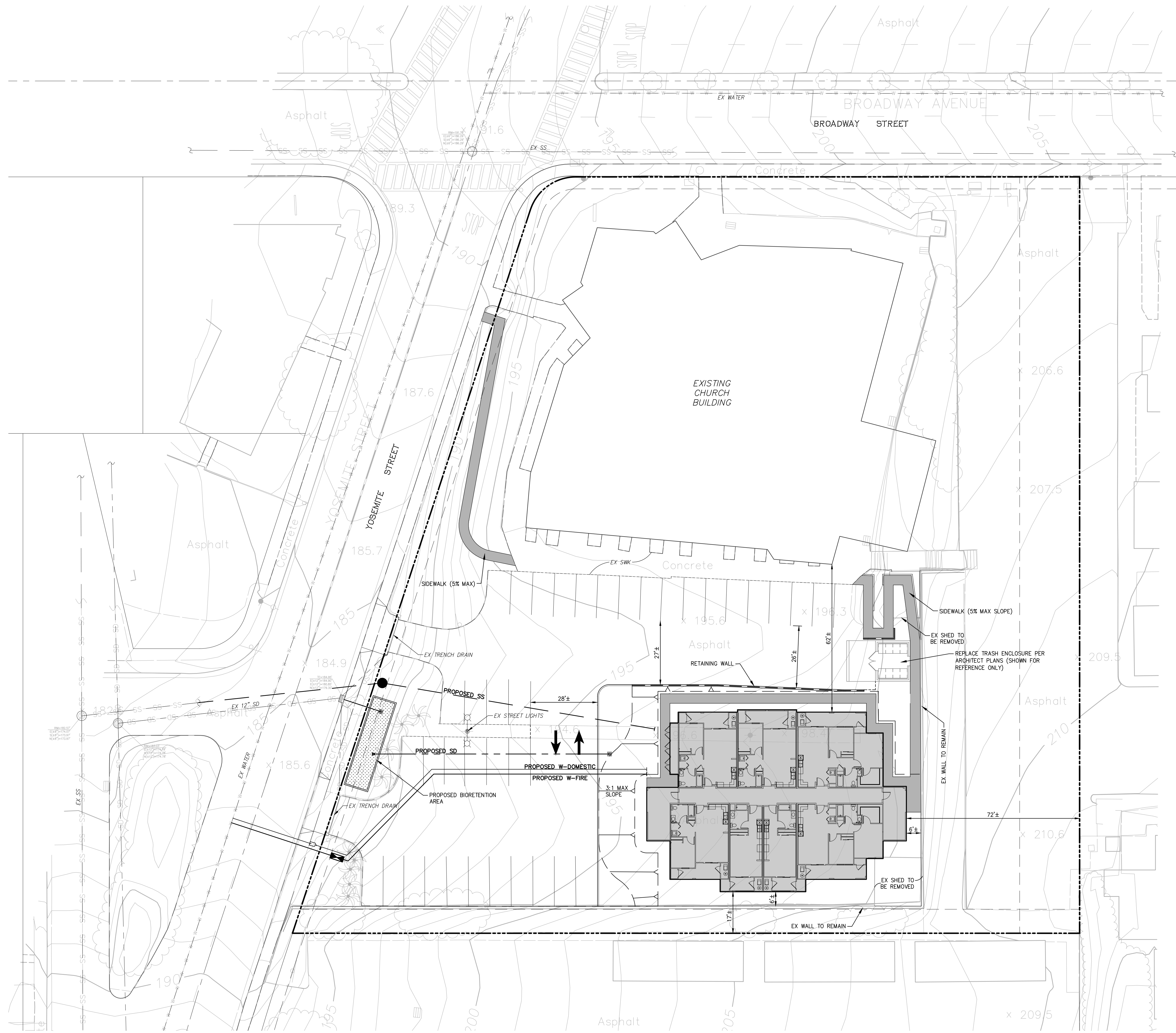
KB - BAKEWELL SEASIDE VENTURES, LLC.

EXTERIOR ELEVATIONS
A03

SDG Architects, Inc.
3361 Walnut Blvd, Suite 120
Brentwood, CA 94513
925.634.7000 | sdgarchitectsinc.com

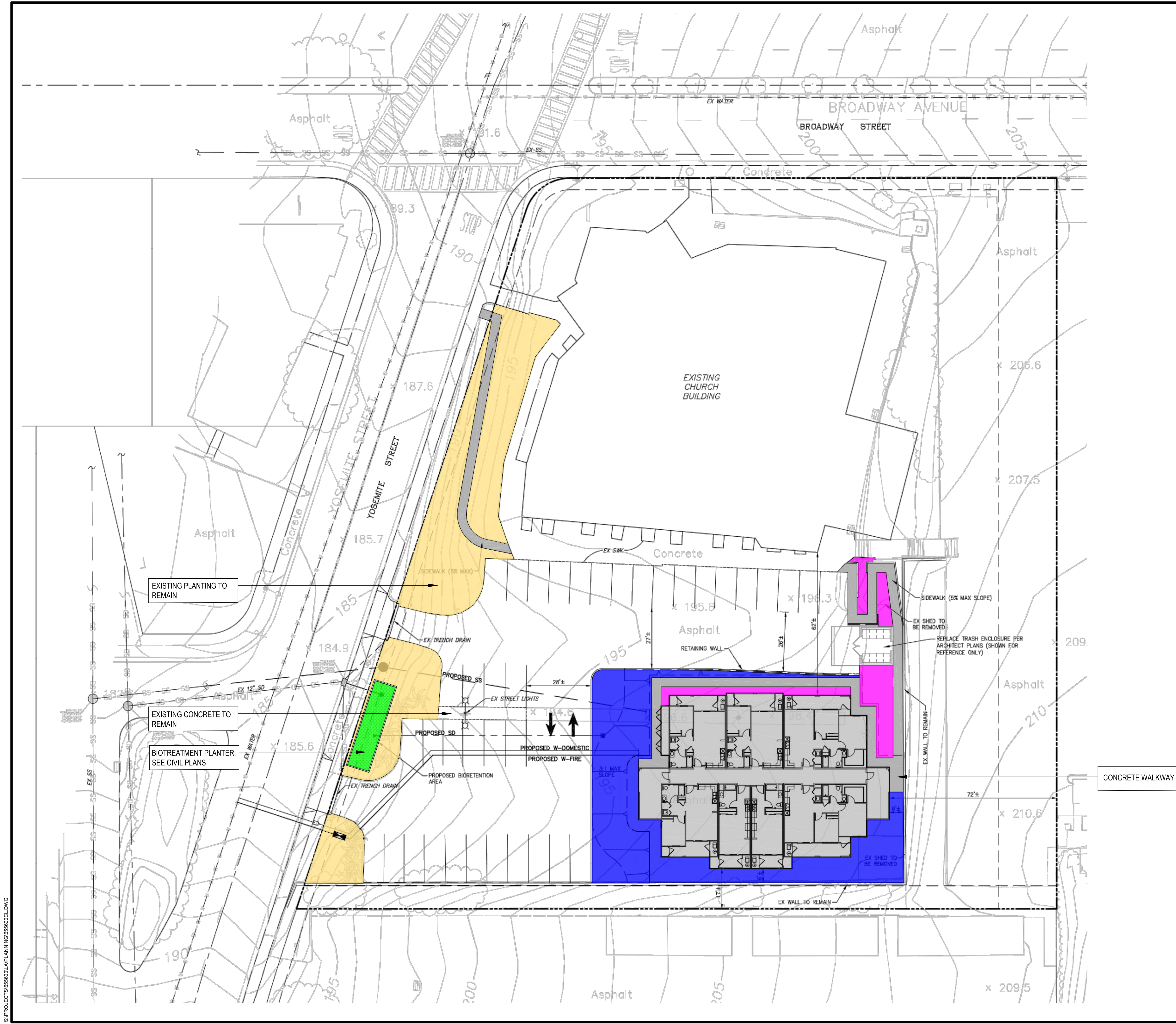


PLOT DATE: September 18, 2023
FILE PATH: W:\Users\13132018\OneDrive\Site\Affordable Housing\Drawings\Preliminary\Exhibits\Site Plan\EMH-CT OFFSITE-VICTORY CHURCH SITE PLAN_2023-09-18.dwg



SITE PLAN EXHIBIT
**AFFORDABLE HOUSING AT
VICTORY TEMPLE CHURCH**
SEASIDE, CALIFORNIA
SEPTEMBER 18, 2023

RJA
RUGGERI-JENSEN-AZAR
ENGINEERS • PLANNERS • SURVEYORS
8055 CAMINO ARROYO GILROY, CA 95020
PHONE: (408) 848-0300 FAX: (408) 848-0302



NOTES:
 1. SEE LANDSCAPE LEGEND ON SHEET L1.2 FOR MORE INFORMATION.
 2. THIS SHEET IS INTENDED TO BE PLOTTED IN COLOR.

PROPOSED PLANTING LEGEND	SYMBOL
ORNAMENTAL PLANTING	
HYDROSEED PLANTING	
BIOTREATMENT PLANTING	
EXISTING PLANTING	

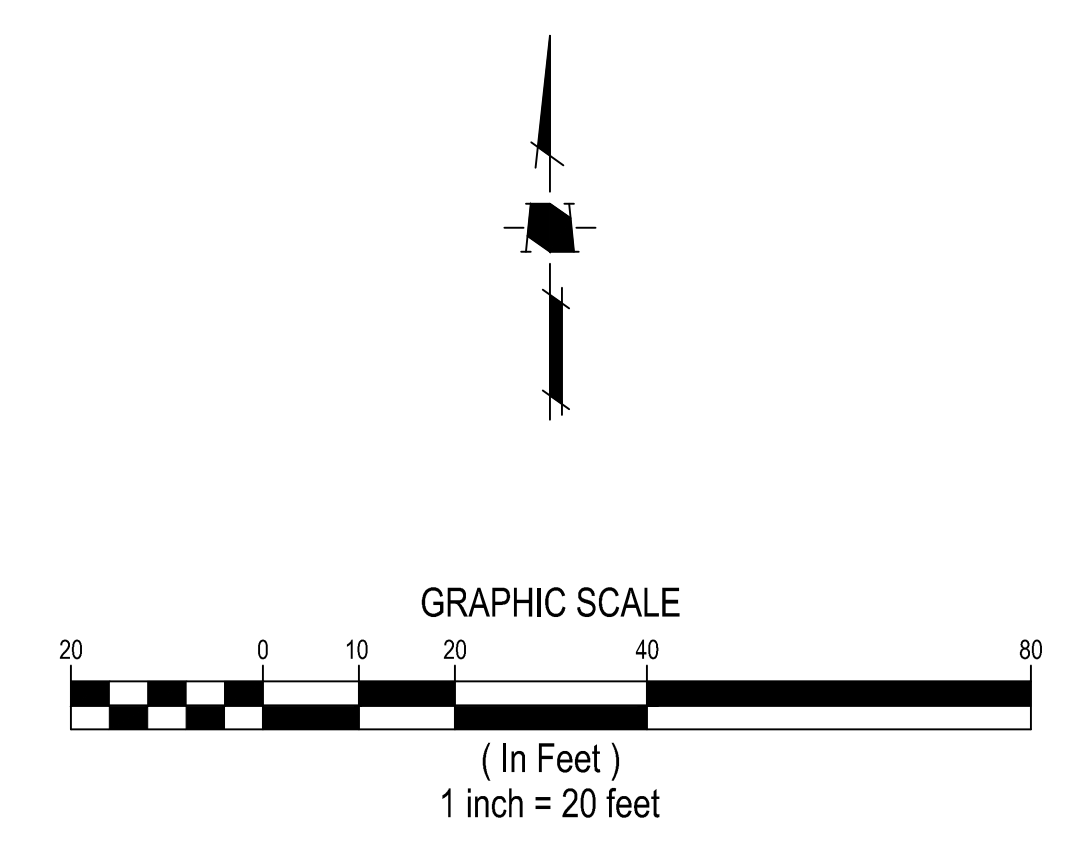
HMH
 Land Use Entitlements
 Land Planning
 Landscape Architecture
 Civil Engineering
 Utility Design
 Land Surveying
 Stormwater Compliance

1570 Oakland Road (408) 487-2200
 San Jose, CA 95131 HMHca.com

**AFFORDABLE HOUSING AT
 VICTORY TEMPLE CHURCH**
 KB HOME
 SEASIDE, CA

NO	DATE	DESCRIPTION
PROJECT NO:	6556.00	
CAD DWG FILE:	655600CL.DWG	
DESIGNED BY:	KY	
DRAWN BY:	JW	
CHECKED BY:	CM	
DATE:	OCT. 20, 2023	
SCALE:	1" = 20'	
©	HMH	

LANDSCAPE PLAN




S:\PROJECT\655600\PLANNING\655600CL.DWG

PLOTTED: 10/11/2023 1:50 PM


PLANTING LEGEND

SYMBOL	SPACING	BOTANICAL NAME	COMMON NAME	CONTAINER SIZE	H&W	WUCOLS WATER USE
--------	---------	----------------	-------------	----------------	-----	------------------

ORNAMENTAL PLANTING


		ACHILLEA FILIPENDULINA	FERN LEAF YARROW	1 GALLON	3' X 3'	LOW
		ERIOPHYLLUM LANATUM 'SISKIYOU'	WOOLLY SUNFLOWER	1 GALLON	1' X 3'	LOW
		LOMANDRA LONGIFOLIA 'BREEZE'	DWARF MAT RUSH	1 GALLON	2' X 3'	LOW
		SALVIA SPATHACEA	HUMMINGBIRD SAGE	1 GALLON	3' X 4'	LOW
	36" O.C.	CEANOTHUS 'CENTENNIAL'	CALIFORNIA LILAC	1 GALLON	1' X 5'	LOW
	18" O.C.	ERIGERON KARVINSKIANUS	SANTA BARBARA DAISY	1 GALLON	18" X 36"	LOW

HYDROSEED

		HYDROSEED MIX - SHALL BE CALIFORNIA NATIVE WILDFLOWER SEED MIX OR OWNER APPROVED EQUAL		1 GALLON		LOW
---	--	--	--	----------	--	-----

SYMBOL	SPACING	BOTANICAL NAME	COMMON NAME	CONTAINER SIZE	H&W	WUCOLS WATER USE
--------	---------	----------------	-------------	----------------	-----	------------------

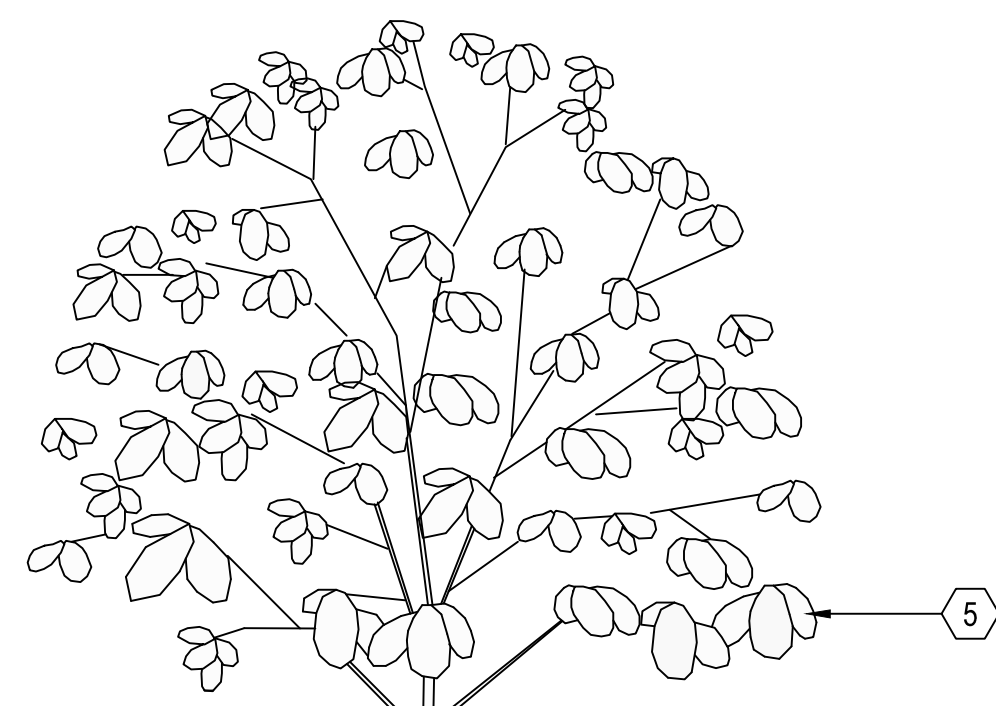
BIOTREATMENT AREAS

	36" O.C.	CHONDROPETALUM TECTORUM 'EL CAMPO'	DWARF CAPE RUSH	5 GALLON	5' X 3'	LOW
	24" O.C.	JUNCUS PATENS 'ELKS BLUE'	GRAY RUSH	1 GALLON	2' X 2'	LOW

ALL BIO-TREATMENT CELLS WILL INCLUDE 3 INCHES OF COMPOSTED, NON-FLOATABLE MULCH IN AREAS BETWEEN STORMWATER TREATMENT PLANTINGS.

- NOTES:**
 1. SEE PLANTING SPECIFICATIONS PRIOR TO INSTALLATION OF PLANT MATERIALS.
 2. ROOT BALL CROWN SHALL EXTEND 1" ABOVE FINNISH GRADE.

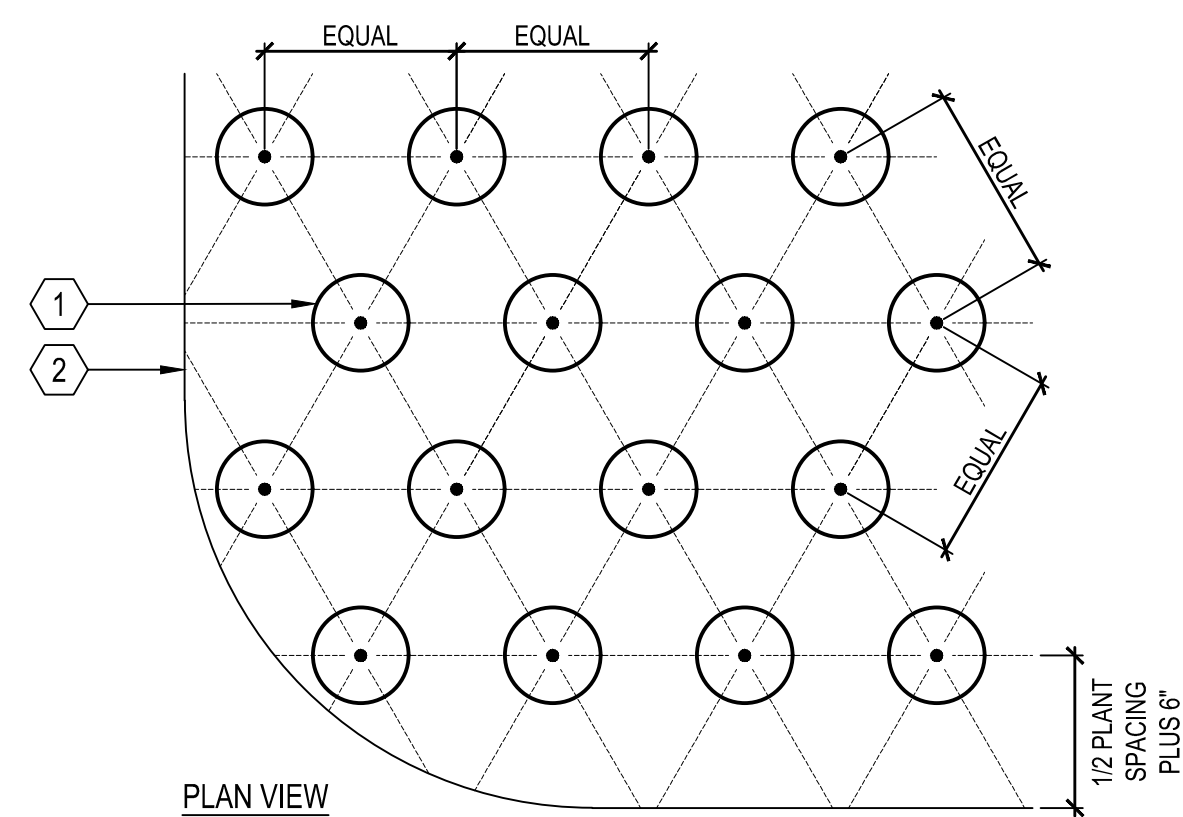
- 1 NATIVE GRADE
- 2 FOOT TAMP BASE
- 3 BACKFILL, PUDDLE AND SETTLE PRIOR TO PLANTING SHRUB
- 4 AGRIFORM PLANT TABLETS, 3 PER SHRUB
- 5 SHRUB
- 6 ROOT BALL
- 7 2" DEEP BASIN AROUND ROOT BALL



C SHRUB
 SCALE: 1" = 1'-0"

- NOTES:**
 1. SEE PLANTING SPECIFICATIONS PRIOR TO INSTALLATION OF PLANT MATERIALS.
 2. SPACING SHALL BE TRIANGULATED UNLESS OTHERWISE NOTED.
 3. INFILL PLANTS AS REQUIRED TO MAINTAIN SPACING AT IRREGULAR EDGES.

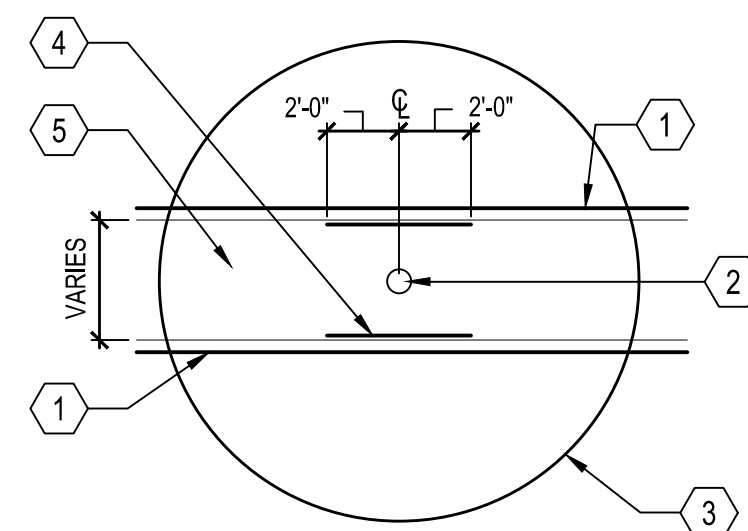
- 1 PLANT, SPACING VARIES, SEE PLANTING LEGEND
- 2 EDGE OF PLANTING AREA



B GROUNDCOVER
 SCALE: 1" = 1'-0"

- NOTES:**
 1. ROOT CONTROL BARRIER SHALL BE USED WHEN TREE IS LOCATED 10' OR LESS FROM WATER, STORM, AND SEWER UTILITIES.
 2. INSTALL AN 18" DEEP 'DEEP ROOT' CONTROL BARRIER AT EDGE OF SIDEWALK.
 3. INSTALL A 24" DEEP 'DEEP ROOT' CONTROL BARRIER AT BACK OF CURB OR INSTALL A 36" DEEP 'DEEP ROOT' CONTROL BARRIER AT BACK OF CURB WHEN WITHIN 6' FROM WATER AND SEWER LATERAL LINES.
 4. NO ROOT CONTROL BARRIERS SHALL BE WITHIN 5' FROM WATER AND SEWER LINES.

- 1 HARDSCAPE EDGE. SEE PLANS.
- 2 TREE TRUNK
- 3 TREE CANOPY
- 4 ROOT BARRIER
- 5 PLANTER AREA



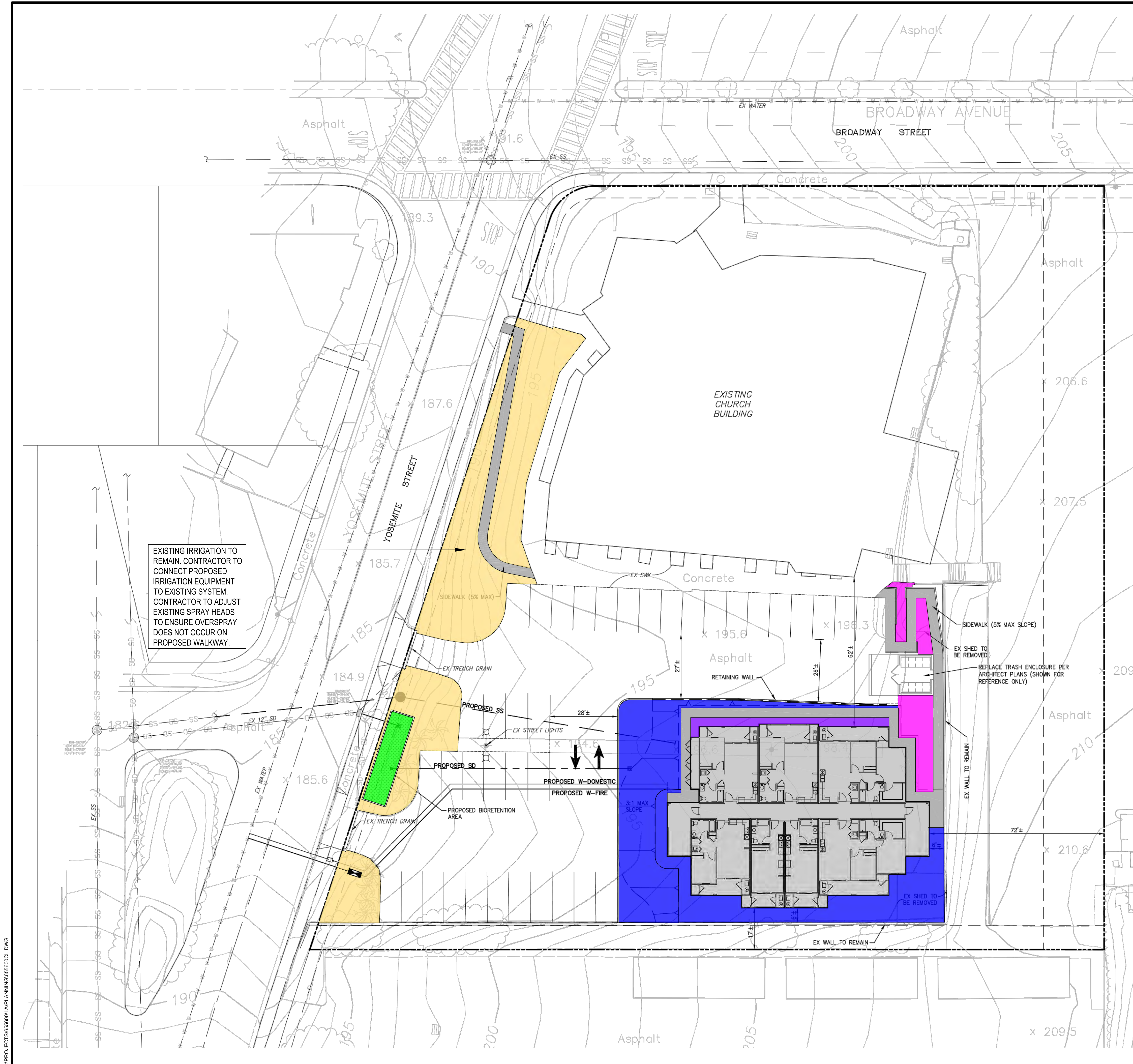
A ROOT BARRIER
 SCALE: N.T.S.

**AFFORDABLE HOUSING AT
 VICTORY TEMPLE CHURCH
 KB HOME
 SEASIDE, CA**

NO	DATE	DESCRIPTION
PROJECT NO:	6556.00	
CAD DWG FILE:	655600CL.DWG	
DESIGNED BY:	KY	
DRAWN BY:	JW	
CHECKED BY:	CM	
DATE:	OCT. 20, 2023	
SCALE:	AS NOTED	
© HMM		

**LANDSCAPE
 LEGEND AND
 DETAILS**

L1.2



EXISTING IRRIGATION TO REMAIN. CONTRACTOR TO CONNECT PROPOSED IRRIGATION EQUIPMENT TO EXISTING SYSTEM. CONTRACTOR TO ADJUST EXISTING SPRAY HEADS TO ENSURE OVERSPRAY DOES NOT OCCUR ON PROPOSED WALKWAY.

IRRIGATION ZONE LEGEND:

- DRIP IRRIGATION FOR ORNAMENTAL PLANTING. CONTRACTOR TO CONNECT TO EXISTING IRRIGATION SYSTEM.
- DRIP IRRIGATION FOR BIORETENTION AREAS
- HAND WATER BY OWNER (PLANTER BOXES)
- HYDROSEED. NO IRRIGATION NECESSARY
- EXISTING IRRIGATION TO REMAIN

IRRIGATION DESIGN CRITERIA:

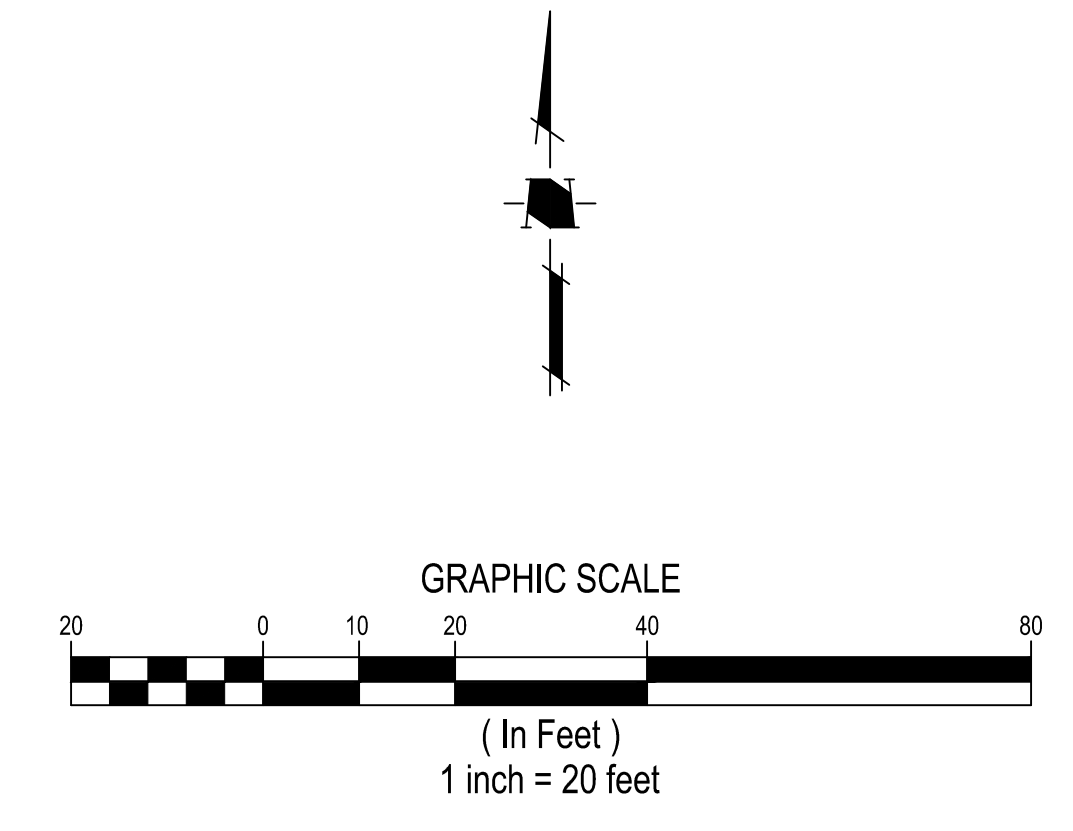
1. FINAL DESIGN SHALL CONFORM TO AB1881 OR CITY ADOPTED WATER EFFICIENT LANDSCAPE ORDINANCE.
2. ALL PLANTING AREAS SHOWN WILL BE COMMONLY MAINTAINED BY THE OWNER AND IRRIGATED BY AN AUTOMATIC IRRIGATION SYSTEM UNLESS OTHERWISE NOTED.
3. IRRIGATION SYSTEMS WILL BE PERMANENT BELOW GROUND AUTOMATED SYSTEMS ADEQUATE FOR THE ESTABLISHMENT AND MAINTENANCE OF ALL PLANT MATERIAL. THESE SYSTEMS WILL BE INSTALLED AS SOON AS PRACTICAL AFTER GRADING AND PRIOR TO PLANT MATERIAL INSTALLATION AND HYDROSEEDING.
4. ALL TURF, SHRUB AND GROUND COVER AREAS WILL BE IRRIGATED BY A PERMANENT, AUTOMATIC, UNDERGROUND IRRIGATION SYSTEM UNLESS OTHERWISE NOTED. ALL SPRAY AREAS WILL BE IRRIGATED BY HIGH EFFICIENCY MATCHED PRECIPITATION RATE POP-UP SPRAY HEADS. TURF, SHRUB, AND GROUND COVER AREAS SHALL BE ON SEPARATE VALVES ACCORDING TO PLANT WATER REQUIREMENTS AND EXPOSURE.
5. ALL IRRIGATION SYSTEMS SHALL BE DESIGNED, MAINTAINED AND MANAGED TO MEET OR EXCEED MINIMUM EFFICIENCY.
6. ALL IRRIGATION EQUIPMENT SHALL BE SCREENED APPROPRIATELY FROM VIEW IN PUBLIC AREAS TO THE MAXIMUM EXTENT POSSIBLE.
7. THE FINAL IRRIGATION PLAN SHALL ACCURATELY AND CLEARLY IDENTIFY:
 - A. LOCATIONS AND SIZES OF WATER POINTS OF CONNECTION.
 - B. LOCATION, TYPE AND SIZE OF ALL COMPONENTS OF THE IRRIGATION SYSTEM, INCLUDING AUTOMATIC CONTROLLERS, MAIN AND LATERAL LINES, VALVES, SPRINKLER HEADS, RAIN SWITCHES, AND QUICK COUPLERS.
 - C. STATIC WATER PRESSURE AT THE POINTS OF CONNECTION.
 - D. FLOW RATE (GALLONS PER MINUTE), REMOTE CONTROL VALVE SIZE, AND DESIGN OPERATING PRESSURE (PSI) FOR EACH STATION.
 - E. HYDROZONE INFORMATION TABLE.
 - F. WATER USE CALCULATIONS.
8. CONTRACTOR SHALL ENSURE THAT ALL EXISTING IRRIGATION EQUIPMENT IS OPERABLE AND MEETS CURRENT STATE MWEO STANDARDS. IF SYSTEM COMPONENTS ARE NOT OPERABLE OR NEED TO BE UPDATED TO MEET STATE STANDARDS, CONTRACTOR SHALL REPLACE WITH SIMILAR AND INSTALL PER DETAILS SHOWN ON SHEET L1.4.
9. THIS SHEET IS INTENDED TO BE PLOTTED IN **COLOR**.

HMH
 Land Use Entitlements
 Land Planning
 Landscape Architecture
 Civil Engineering
 Utility Design
 Land Surveying
 Stormwater Compliance
 1570 Oakland Road (408) 487-2200
 San Jose, CA 95131 HMHca.com

**AFFORDABLE HOUSING AT
 VICTORY TEMPLE CHURCH
 KB HOME
 SEASIDE, CA**

NO	DATE	DESCRIPTION

HYDROZONE PLAN

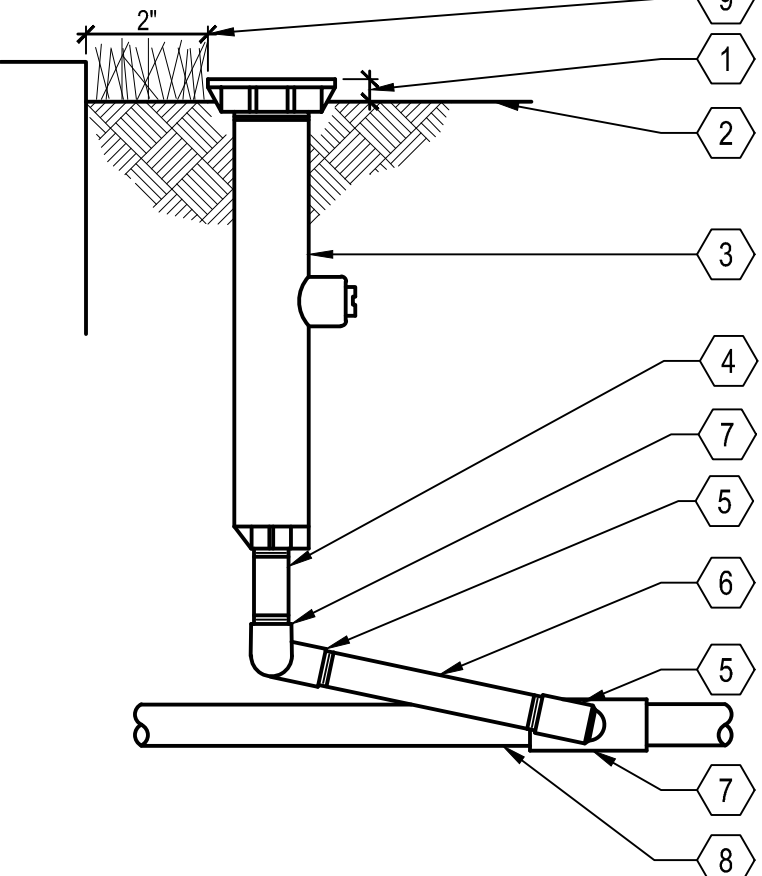


S:\PROJECTS\65600\PLANNING\65600CL.DWG

PLOTTED: 11/20/2023 5:01 PM

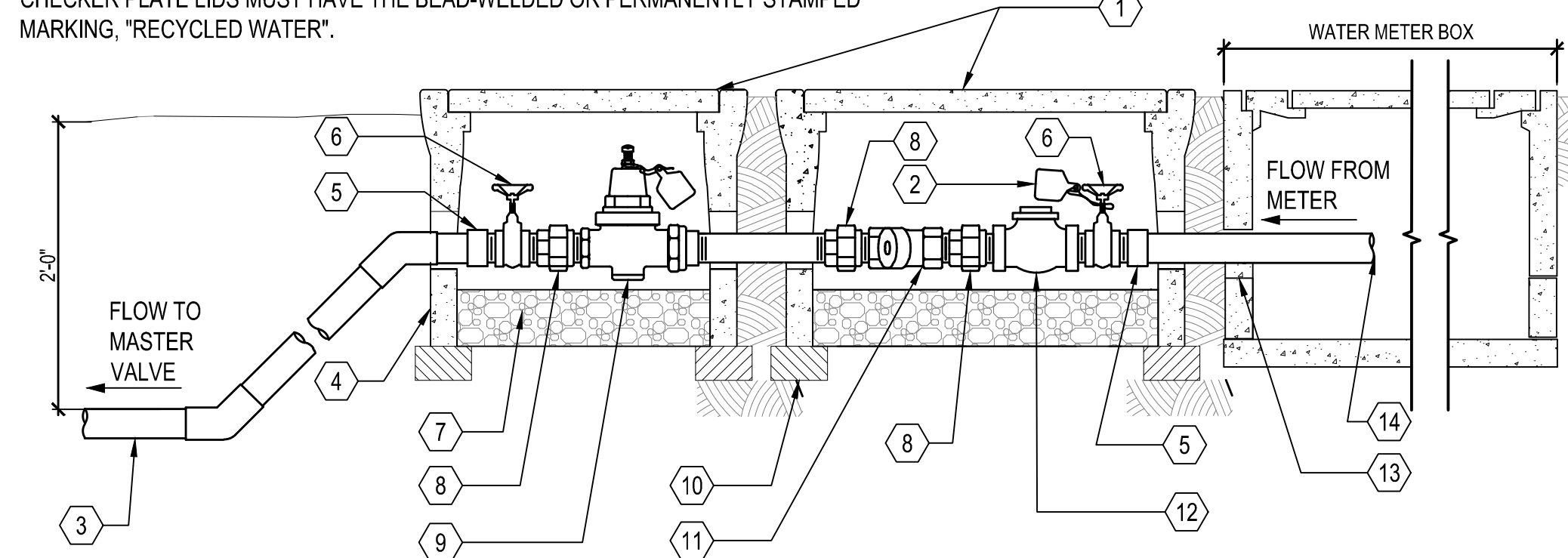
- NOTE:
 1. ALWAYS INSTALL SPRAY SPRINKLER PERPENDICULAR TO FINISHED GRADE.
 2. SEE IRRIGATION LEGEND FOR EQUIPMENT SPECIFICATION.
 3. INSTALL ALL IN ACCORDANCE WITH MANUFACTURER'S RECOMMENDATIONS.

- 1 1/2" ABOVE FINISHED GRADE
- 2 FINISHED GRADE/TOP OF MULCH
- 3 POP-UP SPRAY SPRINKLER; SEE LEGEND FOR MAKE, MODEL AND NOZZLE TYPE
- 4 PVC SCH 80 NIPPLE (LENGTH AS REQUIRED)
- 5 MARLEX STREET ELL
- 6 PVC SCH 80 NIPPLE (LENGTH AS REQUIRED)
- 7 PVC SCH 40 TEE OR ELL
- 8 PVC LATERAL PIPE
- 9 2" FROM EDGE OF HARDSCAPE MINIMUM



J POP UP SPRINKLER
 SCALE: N.T.S.

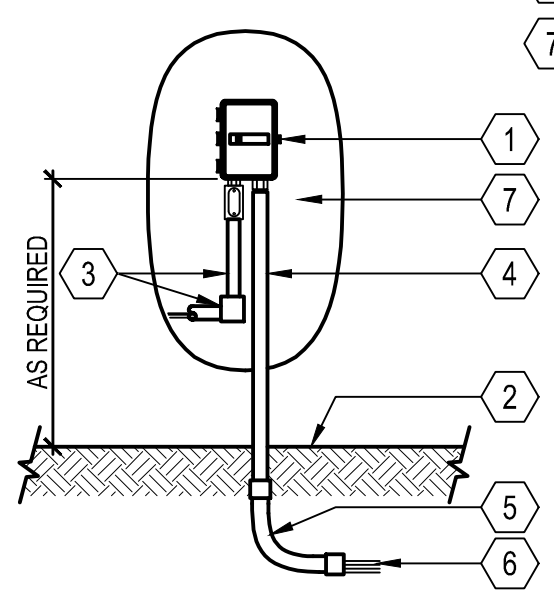
- NOTES:
 1. DO NOT LOCATE REMOTE VALVE IN LAWN
 2. COMPACT SOIL AROUND BOX TO SAME DENSITY AS ADJACENT UNDISTURBED SOIL BUNDLE AND TAPE CONTROL WIRE TO MAINLINE EVERY 10'
 3. SPLICES IN CONTROL WIRE ARE NOT ALLOWED BETWEEN CONTROLLER AND VALVE
 4. SEE IRRIGATION LEGEND FOR EQUIPMENT SPECIFICATION
 5. INSTALL ALL IN ACCORDANCE WITH MANUFACTURER'S RECOMMENDATIONS
 6. FOR RECYCLED WATER SYSTEMS, CONCRETE LIDS MUST HAVE THE MOLDED-IN MARKING FROM THE FACTORY, "RECYCLED WATER", AND CAST IRON AND METAL CHECKER PLATE LIDS MUST HAVE THE BEAD-WELDED OR PERMANENTLY STAMPED MARKING, "RECYCLED WATER".



G STRAINER AND PRESSURE REGULATOR ASSEMBLY
 SCALE: N.T.S.

- 1 CHRISTY CONCRETE VALVE BOX AND LOCKABLE CONCRETE LID WITH VANDAL PROOF LID BOLTS, TOP OF LID SHALL BE NON-SKID SURFACE PERMANENTLY MARKED "RECYCLED WATER" AS REQUIRED PER LID ID DETAIL.
- 2 RECYCLED WATER IDENTIFICATION TAG TYPICAL
- 3 PVC IRRIGATION MAINLINE, TYPICAL, REFER TO IRRIGATION PLAN FOR SIZE AND MATERIAL.
- 4 CONC. VALVE BOX AND EXTENSION
- 5 PVC MALE ADAPTER
- 6 GATE VALVE
- 7 3/4" CRUSHED ROCK, 6" DEEP
- 8 PVC UNION
- 9 PRESSURE REDUCING VALVE
- 10 COMMON BRICK
- 11 STRAINER
- 12 SWING CHECK VALVE
- 13 GROUT AS REQUIRED
- 14 POINT OF CONNECTION INSIDE METER BOX
- 15 FINISHED GRADE

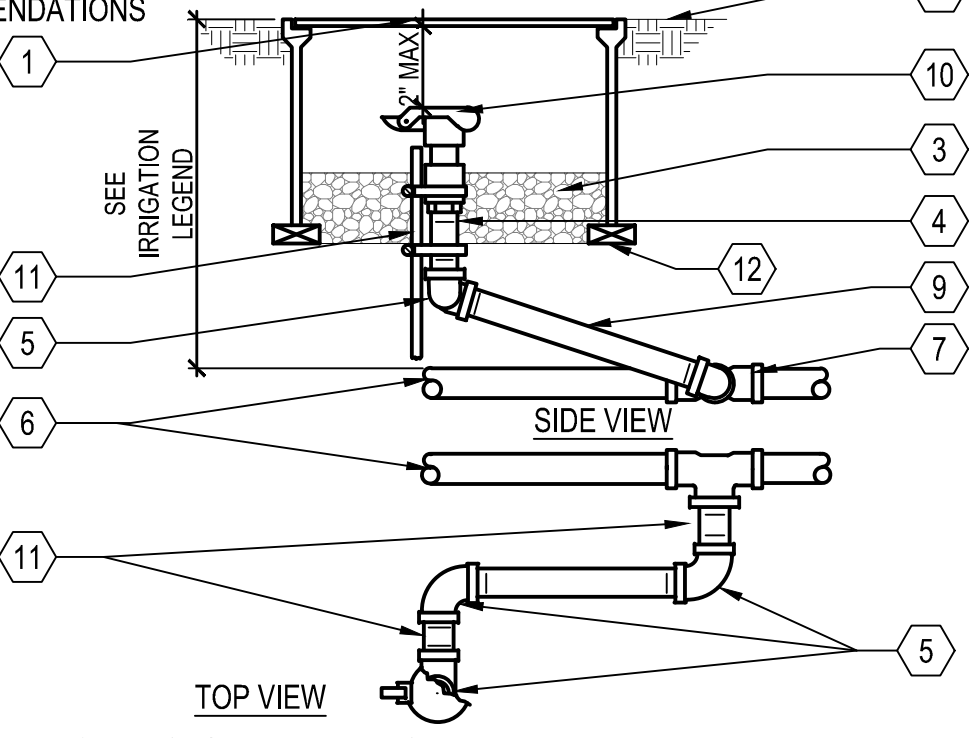
- NOTES:
 1. VERIFY LOCATION WITH PROJECT ELECTRICIAN.
 2. ALL ELECTRICAL WORK MUST CONFORM TO LOCAL CODES. REFER TO PRODUCT LITERATURE FOR ADDITIONAL INSTALLATION REQUIREMENTS. THIS DRAWING IS PROVIDED FOR REFERENCE ONLY. INDIVIDUAL PROJECT REQUIREMENTS AND LOCAL CODES MAY DICTATE DIFFERENCES IN INSTALLATION PROCEDURES THAT ARE NOT IDENTIFIED ON THIS DETAIL.



B WALL MOUNT CONTROLLER
 SCALE: N.T.S.

- NOTE:
 1. NIPPLES AND FITTINGS TO BE SAME SIZE AS VALVE IPT INLET THREAD SIZE
 2. SEE IRRIGATION LEGEND FOR SPECIFICATION
 3. INSTALL ALL IN ACCORDANCE WITH MANUFACTURER'S RECOMMENDATIONS

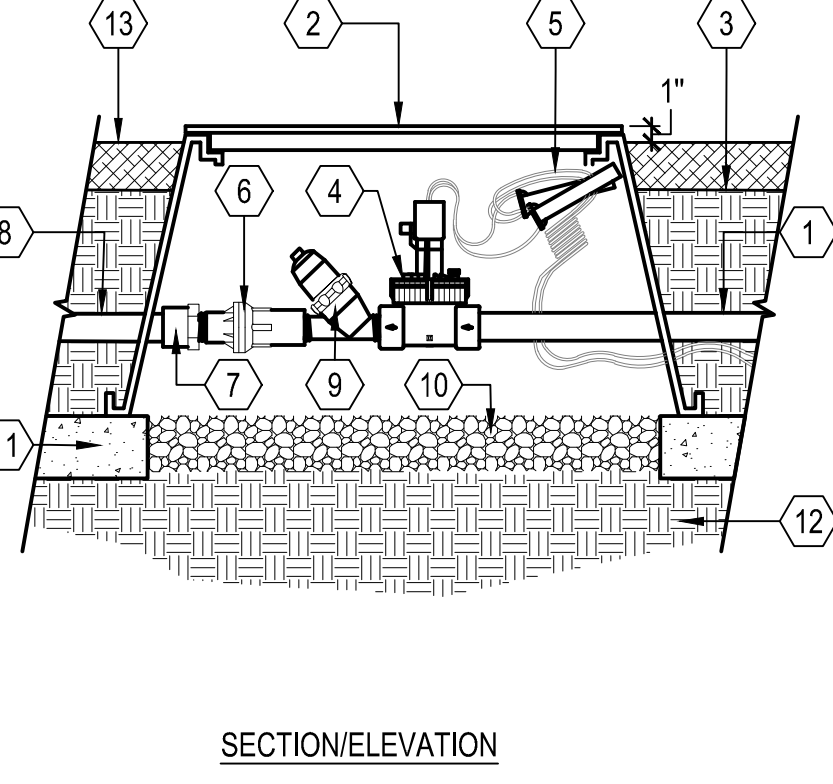
- 1 10" ROUND PLASTIC VALVE BOX WITH BOLT DOWN LID
- 2 FINISHED GRADE
- 3 PEA GRAVEL SUMP, MIN. 6" DEPTH
- 4 3" LONG SCHEDULE 80 PVC THREADED NIPPLE
- 5 SCH 80 PVC THREADED 90 DEGREE ELL
- 6 PVC MAINLINE
- 7 MAINLINE FITTING
- 8 10" LONG SCH 80 PVC THREADED NIPPLE
- 9 QUICK COUPLING VALVE
- 10 1 1/4" x 1 1/4" x 3/16" ANGLE IRON 30" LONG, 2 STAINLESS STEEL STRAPS
- 11 BRICK SUPPORTS, 2 TOTAL



I QUICK COUPLING VALVE
 SCALE: N.T.S.

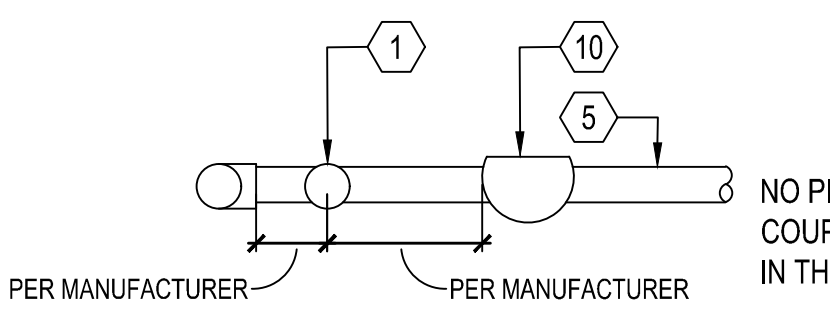
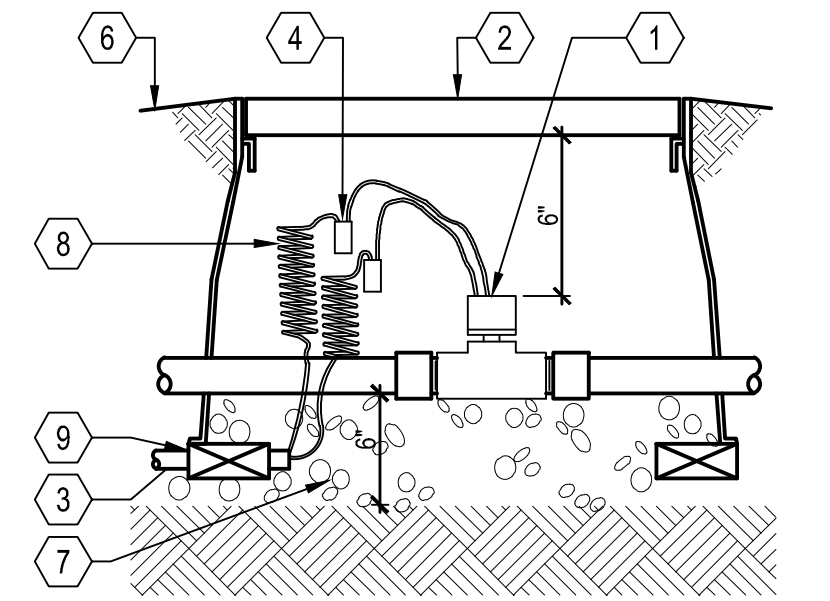
- NOTES:
 1. SEE IRRIGATION LEGEND FOR EQUIPMENT SPECIFICATION.
 2. INSTALL ALL IN ACCORDANCE WITH MANUFACTURER'S RECOMMENDATIONS.

- 1 PVC MAINLINE
- 2 PLASTIC VALVE BOX, HEAT BRAND STATION NUMBER ON LID IN 2" CHARACTERS.
- 3 FINISHED GRADE
- 4 VALVE, SEE LEGEND
- 5 CONTROL WIRES WITH 36" SERVICE COIL AND WATERPROOF WIRE CONNECTIONS, SEE LEGEND.
- 6 PRESSURE REGULATOR, SEE LEGEND
- 7 SCHEDULE 80 UNION
- 8 PVC LATERAL
- 9 FILTER, SEE LEGEND
- 10 1 CU. FT. PEA GRAVEL SUMP
- 11 BRICK SUPPORTS
- 12 NATIVE GRADE
- 13 BARK MULCH / PLANTING (1" BELOW VALVE LID)



F DRIPLINE REMOTE CONTROL VALVE, PRESSURE REGULATOR AND FILTER
 SCALE: N.T.S.

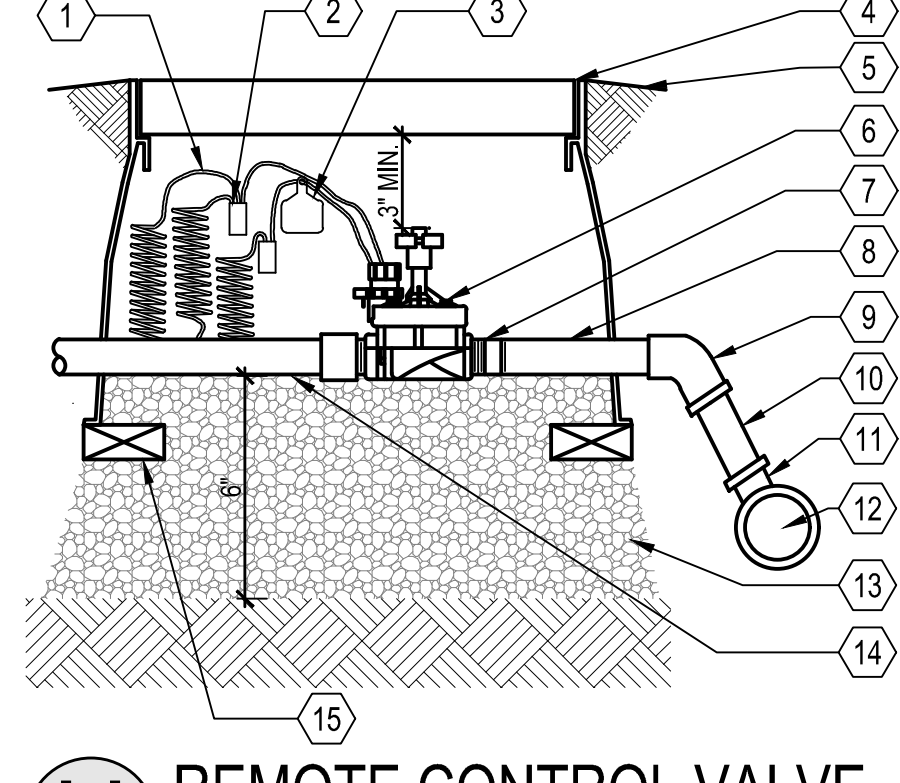
- NOTES:
 1. SEE IRRIGATION LEGEND FOR EQUIPMENT SPECIFICATION
 2. INSTALL ALL IN ACCORDANCE WITH MANUFACTURER'S RECOMMENDATIONS



D FLOW SENSOR
 SCALE: N.T.S.

- NOTES:
 1. DO NOT LOCATE REMOTE CONTROL VALVE IN LAWN
 2. COMPACT SOIL AROUND BOX TO SAME DENSITY AS ADJACENT UNDISTURBED SOIL BUNDLE AND TAPE CONTROL WIRE TO MAINLINE EVERY 10'
 3. SPLICES IN CONTROL WIRE ARE NOT ALLOWED BETWEEN CONTROLLER AND VALVE
 4. SEE IRRIGATION LEGEND FOR EQUIPMENT SPECIFICATION
 5. INSTALL ALL IN ACCORDANCE WITH MANUFACTURER'S RECOMMENDATIONS

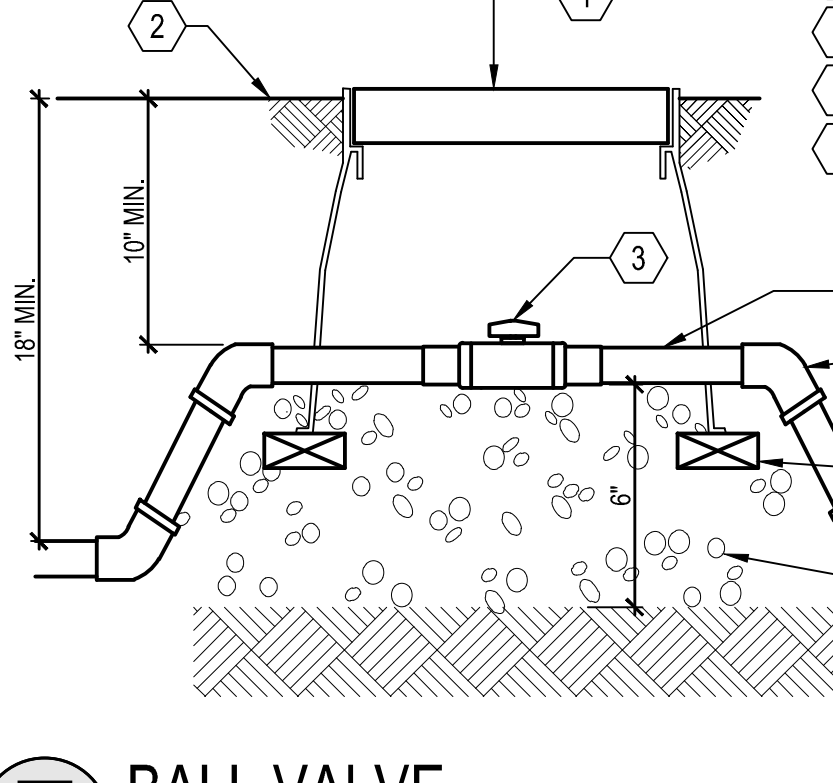
- 1 18" LENGTH EXPANSION LOOP
- 2 SCOTCH LOK #3577 CONNECTOR SEALING PACK OR EQUAL
- 3 ID TAG FOR VALVE STATION NUMBER
- 4 VALVE BOX: CARSON SPECIFICATION GRADE, NDS PRO SERIES, OR EQUAL
- 5 TOP OF MULCH
- 6 REMOTE CONTROL VALVE: SEE IRRIG. LEGEND
- 7 PVC SCH 80 NIPPLE (CLOSE)
- 8 PVC SCH 40 MIN 8" LONG
- 9 PVC 45 FITTING SCH 40
- 10 PVC SCH 40
- 11 S X S FITTING
- 12 PVC MAINLINE PIPE
- 13 PEA GRAVEL SUMP, MIN. 6" DEEP
- 14 LATERAL LINE
- 15 BRICK SUPPORT-1 PER CORNER



H REMOTE CONTROL VALVE
 SCALE: N.T.S.

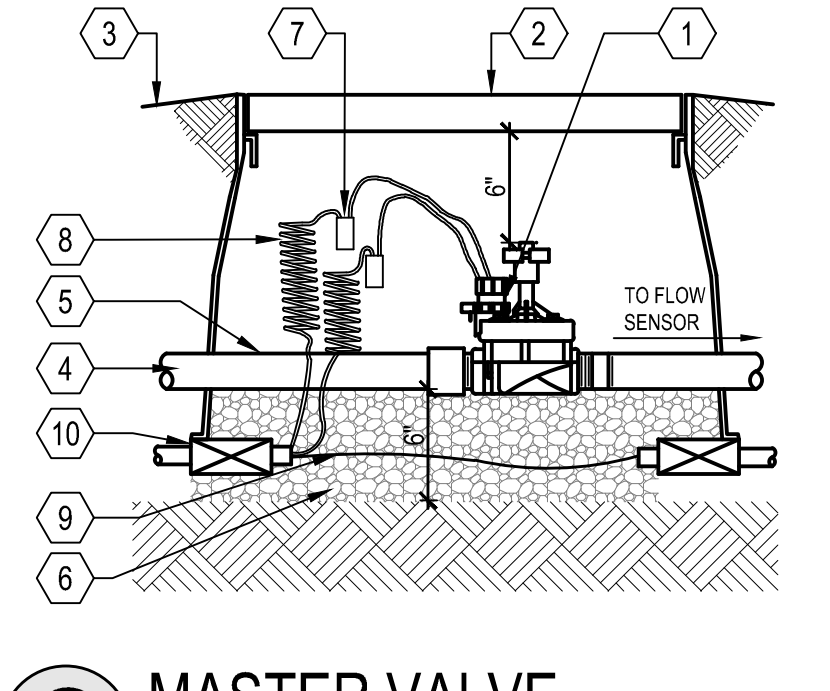
- NOTES:
 1. PLACE AGGREGATE PRIOR TO INSTALLATION OF VALVE BOX
 2. INSTALL VALVE BOX SO TOP OF BOX IS FLUSH WITH ADJACENT HARDSCAPE

- 1 6" ROUND PLASTIC VALVE BOX WITH BOLT DOWN LID
- 2 FINISHED GRADE/ BEFORE PLANTING
- 3 BALL VALVE: SEE LEGEND FOR MAKE AND MODEL - LINE SIZE
- 4 PVC SCH 40 MIN 8" LONG
- 5 PVC 45 FITTING SCH 40 (TYP.)
- 6 PVC SCH 40
- 7 BRICK SUPPORT, 2 TOTAL
- 8 PVC MAINLINE PIPE
- 9 PEA GRAVEL SUMP, MIN. 6" DEEP



E BALL VALVE
 SCALE: N.T.S.

- NOTES:
 1. DO NOT LOCATE REMOTE VALVE IN TURF
 2. COMPACT SOIL AROUND BOX TO SAME DENSITY AS ADJACENT UNDISTURBED SOIL BUNDLE AND TAPE CONTROL WIRE TO MAINLINE EVERY 10'
 3. SPLICES IN CONTROL WIRE ARE NOT ALLOWED BETWEEN CONTROLLER AND VALVE
 4. SEE IRRIGATION LEGEND FOR EQUIPMENT SPECIFICATION
 5. INSTALL ALL IN ACCORDANCE WITH MANUFACTURER'S RECOMMENDATIONS

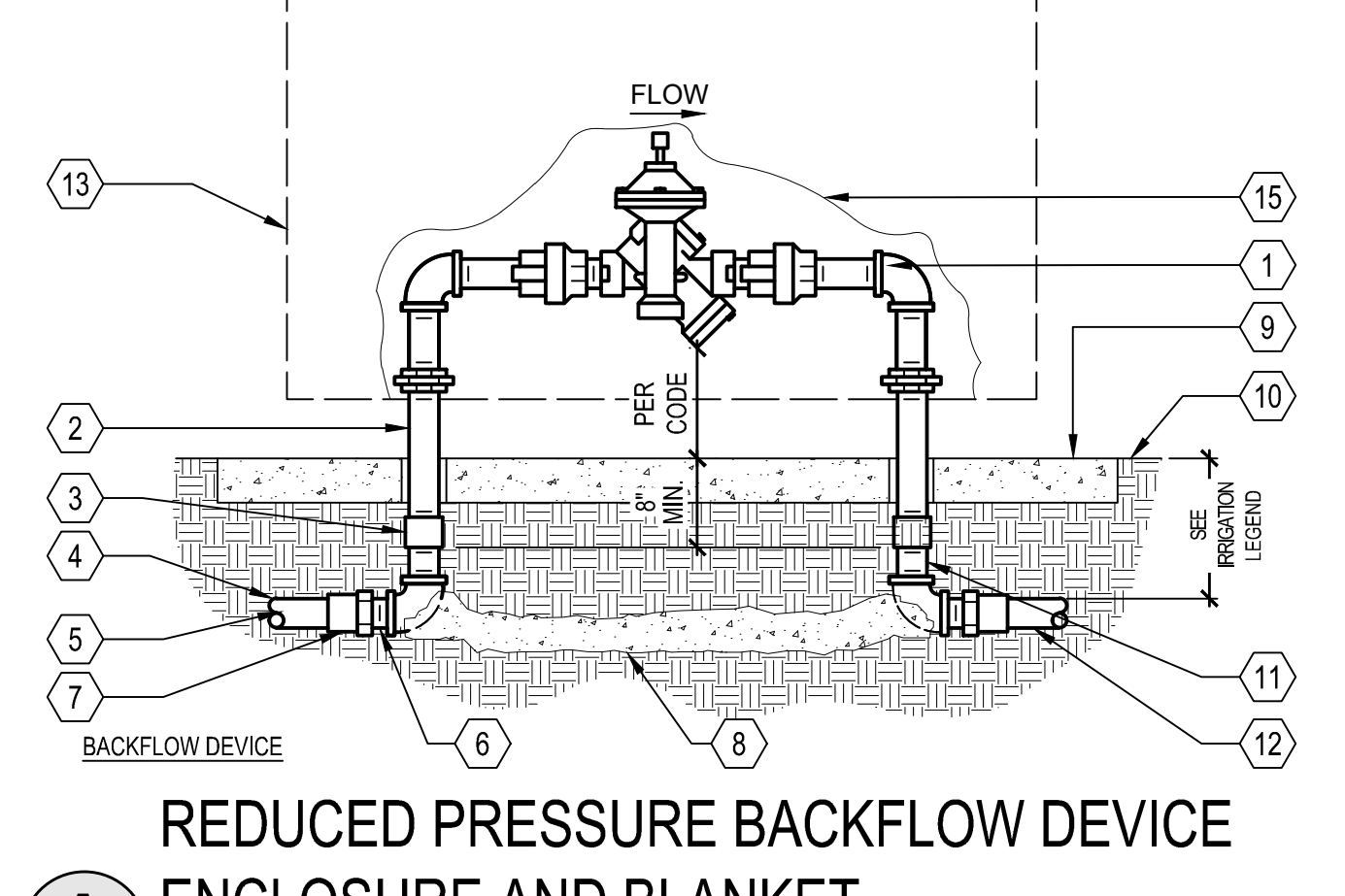
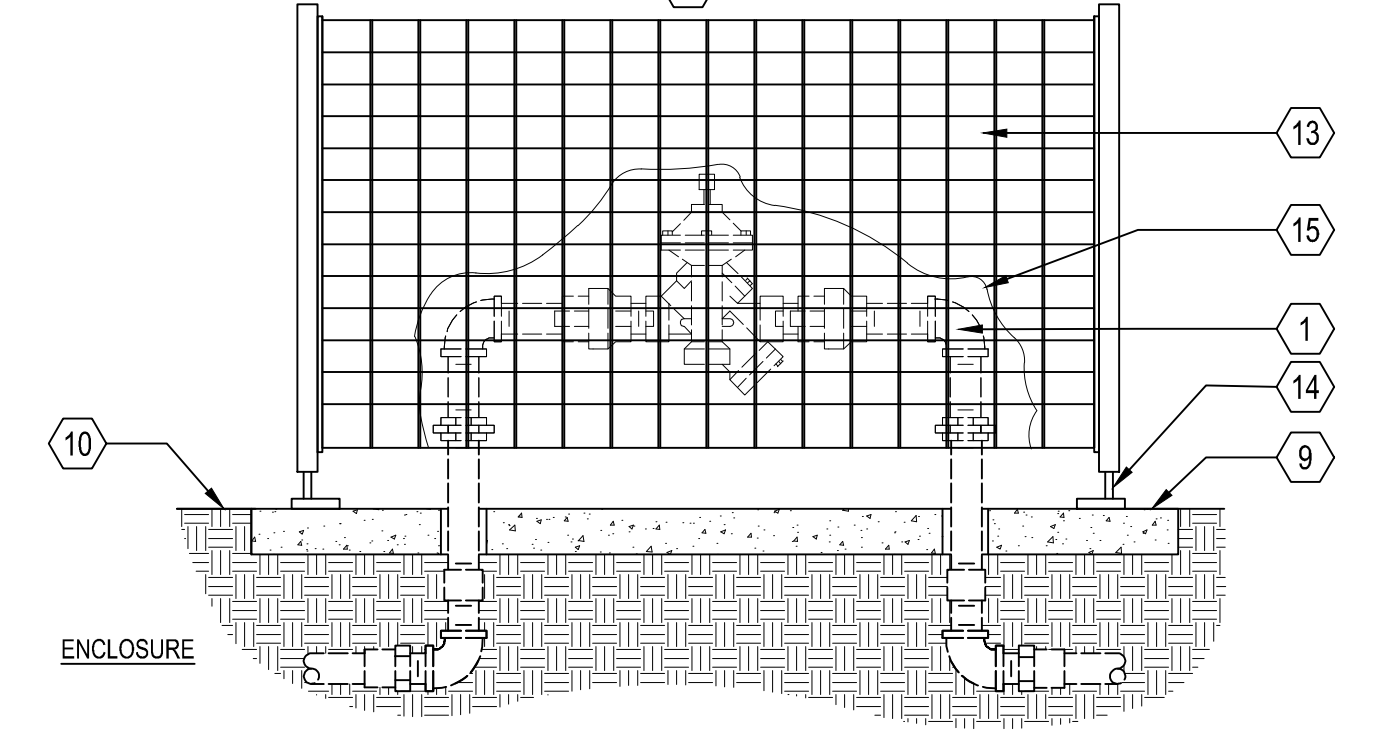


C MASTER VALVE
 N.T.S.

- 1 MASTER VALVE-SEE LEGEND
- 2 CARSON #1324 RECTANGULAR VALVE BOX WITH BLACK BOLT DOWN COVER, OR APPROVED EQUAL. HEAT BRAND "MV" ON LID IN 2" HIGH LETTERS
- 3 FINISHED GRADE
- 4 FROM POINT OF CONNECTION- ADAPT AS REQUIRED
- 5 SCH. 80 TOE NIPPLE- LENGTH AS REQUIRED
- 6 PEA GRAVEL SUMP, MIN 6" DEEP
- 7 3M DBY WIRE CONNECTOR CONTROL AND COMMON WIRE TO DESIGNATED AUTOMATIC CONTROLLER
- 8 FLOW SENSOR CABLE WITHIN CONDUIT
- 9 BRICK SUPPORT, 1 PER CORNER

- NOTES:
 1. NIPPLES AND FITTINGS TO BE SAME IPT SIZE AS BACKFLOW ASSEMBLY.
 2. INSTALL GREEN WEATHER GUARD BACKFLOW BLANKET OR APPROVED EQUAL.
 3. DISSIMILAR METALS SHALL BE SEPARATED BY AN APPROVED DIELECTRIC FITTING.
 4. ENCLOSURE SHALL BE STRONG BOX LOW PROFILE SMOOTH TOUCH SBBC-30CR OR SBBC-45CR, COLOR DARK GREEN OR APPROVED EQUAL. ENCLOSURE SHALL BE SIZED BASED ON BACKFLOW DEVICE SIZE. CONTACT MANUFACTURER V.I.T. PRODUCTS 1-800-729-1314.

- 1 REDUCED PRESSURE BACKFLOW ASSEMBLY PER IRRIGATION LEGEND
- 2 SCH.40 GALVANIZED STEEL NIPPLES-2 TOTAL
- 3 SCH. 80 PVC COUPLING- 2 TOTAL
- 4 SCH. 80 PVC 90° ELBOW-2 TOTAL (T x T CONNECTION)
- 5 PVC MAIN LINE TO POINT OF CONNECTION
- 6 BUSH AS NECESSARY FOR SIZE TRANSITION
- 7 SCH. 80 PVC MALE ADAPTER-2 TOTAL
- 8 CONCRETE SUPPORT BLOCK
- 9 Poured CONCRETE BASE-6" MIN. THICKNESS-EXTEND 4" BEYOND OUTSIDE DIMENSIONS OF ENCLOSURE
- 10 FINISHED GRADE
- 11 SCH. 80 PVC NIPPLE-2 TOTAL
- 12 PVC MAIN LINE TO IRRIGATION SYSTEM
- 13 BACKFLOW ENCLOSURE-SEE NOTE 4.
- 14 ANCHOR ROD (TYPICAL)
- 15 BACKFLOW BLANKET



A REDUCED PRESSURE BACKFLOW DEVICE ENCLOSURE AND BLANKET
 SCALE: N.T.S.

**AFFORDABLE HOUSING AT
 VICTORY TEMPLE CHURCH
 KB HOME
 SEASIDE, CA**

NO	DATE	DESCRIPTION
PROJECT NO:	6556.00	
CAD DWG FILE:	655600CL.DWG	
DESIGNED BY:	KY	
DRAWN BY:	JW	
CHECKED BY:	CM	
DATE:	OCT. 20, 2023	
SCALE:	AS NOTED	
© HMM		

S:\PROJECTS\655600\PLANNING\655600CL.DWG

PLOTTED: 10/11/2023 1:51 PM